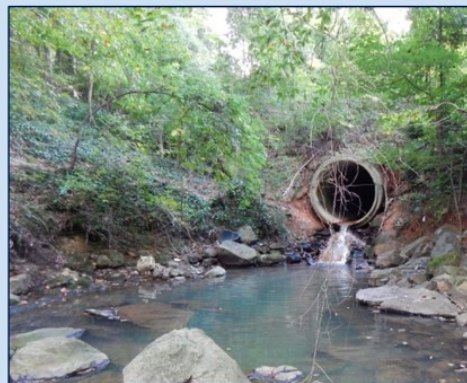


## Mop water

- ❁ **Mop sinks:** Empty dirty mop water into mop sinks or toilets
- ❁ **Location:** Mop sinks are inside some of the bathrooms at Kenan Stadium
- ❁ **If locked:** If the room with the mop sink is locked, ask your supervisor to unlock it
- ❁ **Outside:** Never put any mop water or chemical into an outside storm drain



Storm drains  
go to creeks



Questions? Call UNC Environment, Health and Safety at (919) 962-5507

