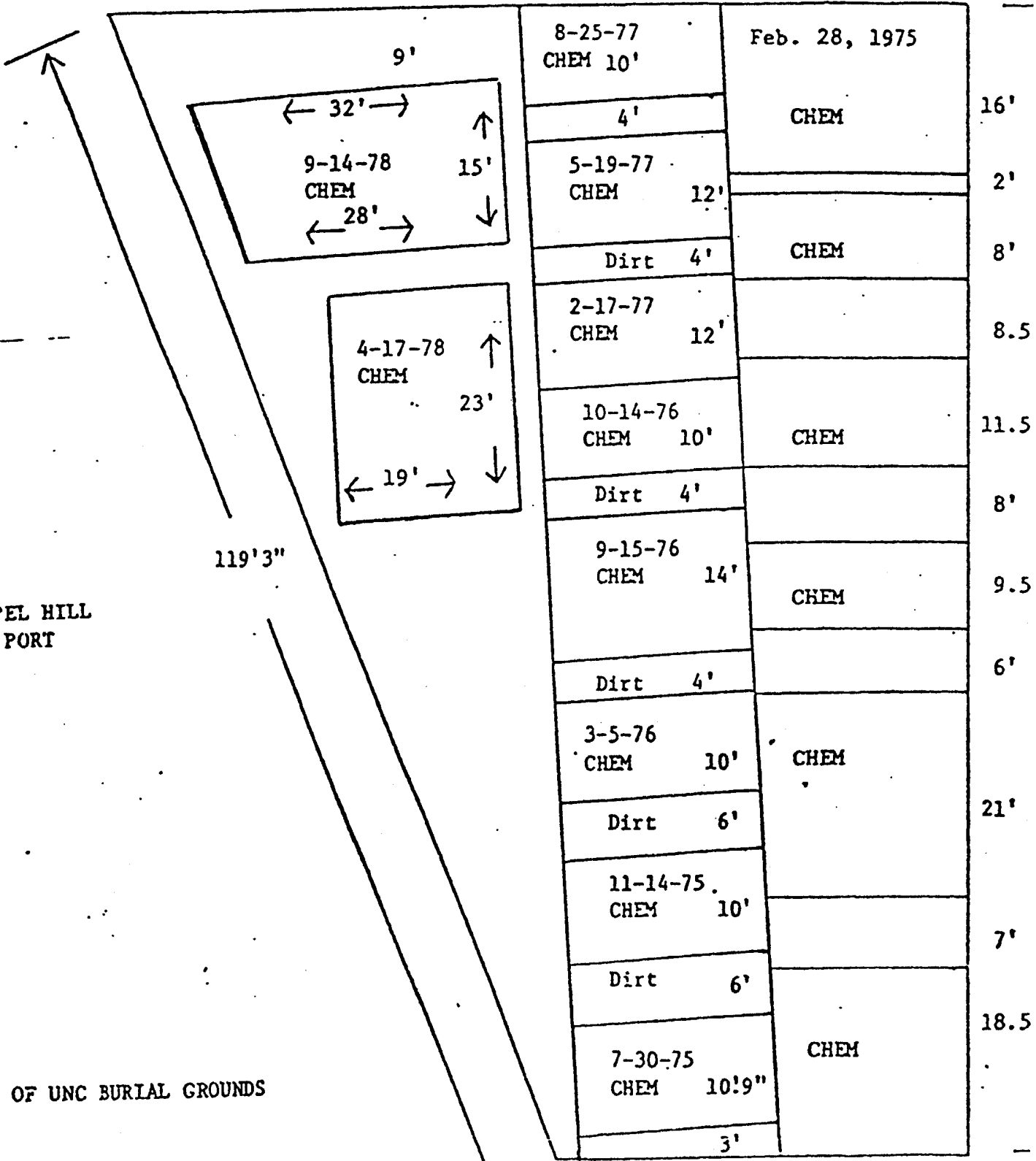


92' 10"

26' 9"



CHAPEL HILL AIR PORT

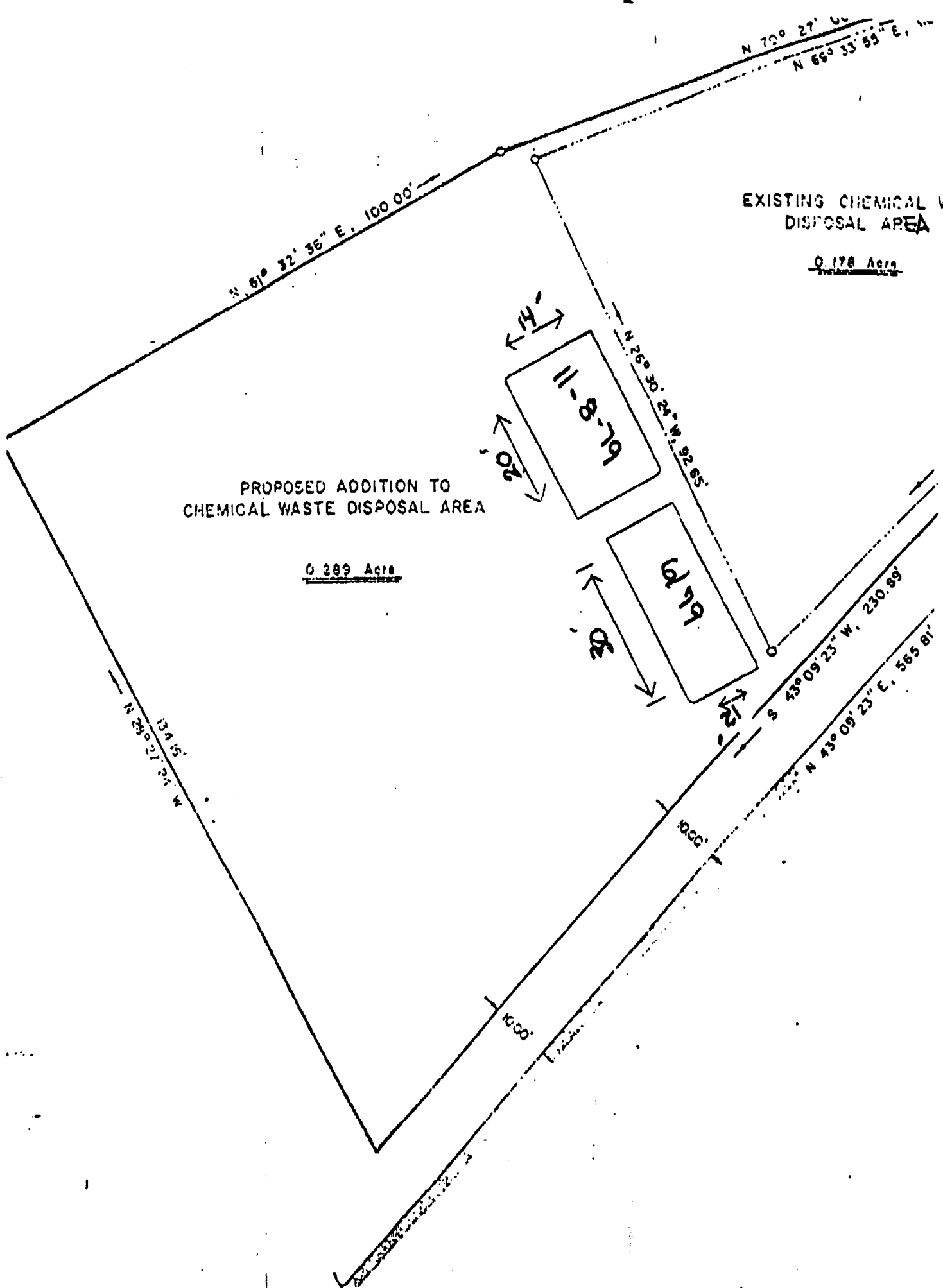
MAP OF UNC BURIAL GROUNDS

Scale: 1/16" = 1 ft.

22'

20'

44' 1"



CHEMICAL WASTES COLLECTED FROM LABORATORIES
ON CAMPUS FOR DISPOSAL



- Organic waste (unknown)
- Chloride color reagent (containing mercury)
- Acetic acid
- Nitric acid
- Sulfuric acid
- Hydrochloric acid
- Formaldehyde
- Inorganic waste (unknown)
- Acetone
- Ascarite (solid)
- Trimethyl chlorosilane
- Potassium hydroxide
- Chloroform
- Butyl alcohol
- Ether
- Bromohexane
- Iodine waste
- Dyes
- Acetic anhydride
- Propionic acid
- N-N-Dimethyl formamide
- Butyl ether
- Carbon tetrachloride
- Hydrozine monohydrate
- Phosphorus pentoxide (solid)
- Ethyl acetate
- Benzene
- Xylene
- Sodium chloride irrigation
- Mercuric cyanide
- Santovac 5 (vacuum pump fluid)
- Isobutyl alcohol
- Toluene
- Cyclohexane
- Sodium sulfate
- Sodium bisulfite
- Barium hydroxide
- Sodium borate
- Sodium bismuthate
- Polyethylene glycol , 20,000
- Iodomethane
- Calcium chloride
- E amino-n-caproic acid
- Hydrozine hydrate
- Mercury (atomic absorption standard) 1,000 ppm
- 2,4 Dichlorophenol
- Silver waste
- 2-Propanol
- Vacuum pump oil
- Butanol lithium acetate
- Benzaldehyde
- Methanol
- N-Heptane
- iso-propylamine
- Sodium borohydride
- Oxalic acid
- Ammonium hydroxide
- 1,2 Dichloro ethane
- Ethyl hydrogen peroxide
- Methyrene chloride
- Phosphorus pentoxide
- Mercuric nitrate
- Perchloric acid 70%
- Potassium cyanide
- Chromic acid
- Paladium
- Bromine water
- Pyridine
- Arsenic (atomic absorption standard,
1,000 ppm)
- Bun (blood serum, mercury)
- Hexane
- Pentane
- Dimethyl sulfoxide
- Lithium acetate
- Glycerin
- Sodium dichromate
- 2-merpato ethanol
- Silicone
- Osmium tetroxide
- Aniline
- Picric acid
- Bromobenzene
- Biofluor
- Hydroxide of hyamine
- Choline bicarbonate
- Propylene oxide
- Ethylene glycol
- Propane fuel cans ("empty")
- 1,4 Dioxane