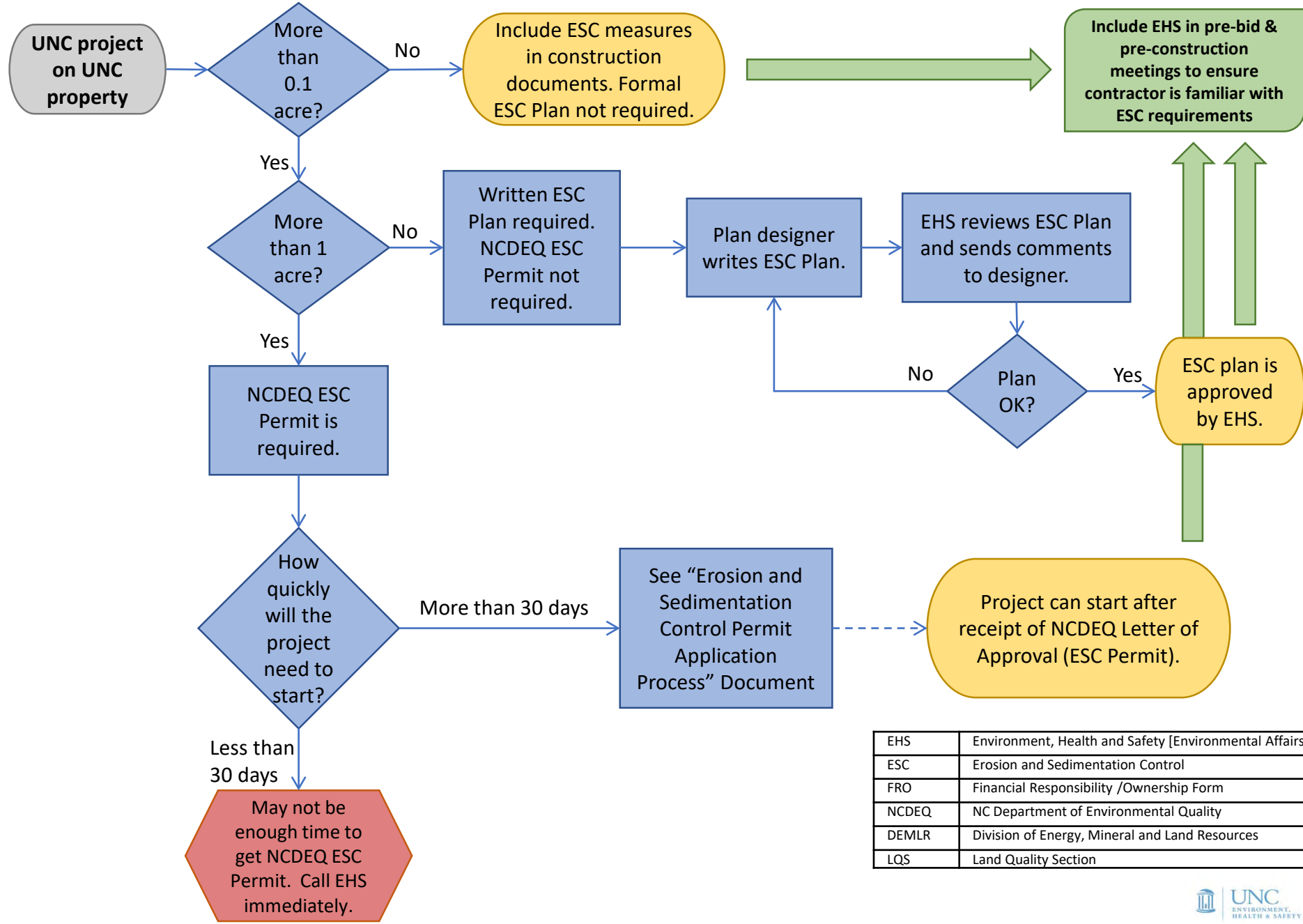


# What are the Erosion and Sedimentation Control Plan (ESC) requirements for any size UNC outdoor project?



EHS	Environment, Health and Safety [Environmental Affairs]
ESC	Erosion and Sedimentation Control
FRO	Financial Responsibility /Ownership Form
NCDEQ	NC Department of Environmental Quality
DEMLR	Division of Energy, Mineral and Land Resources
LQS	Land Quality Section