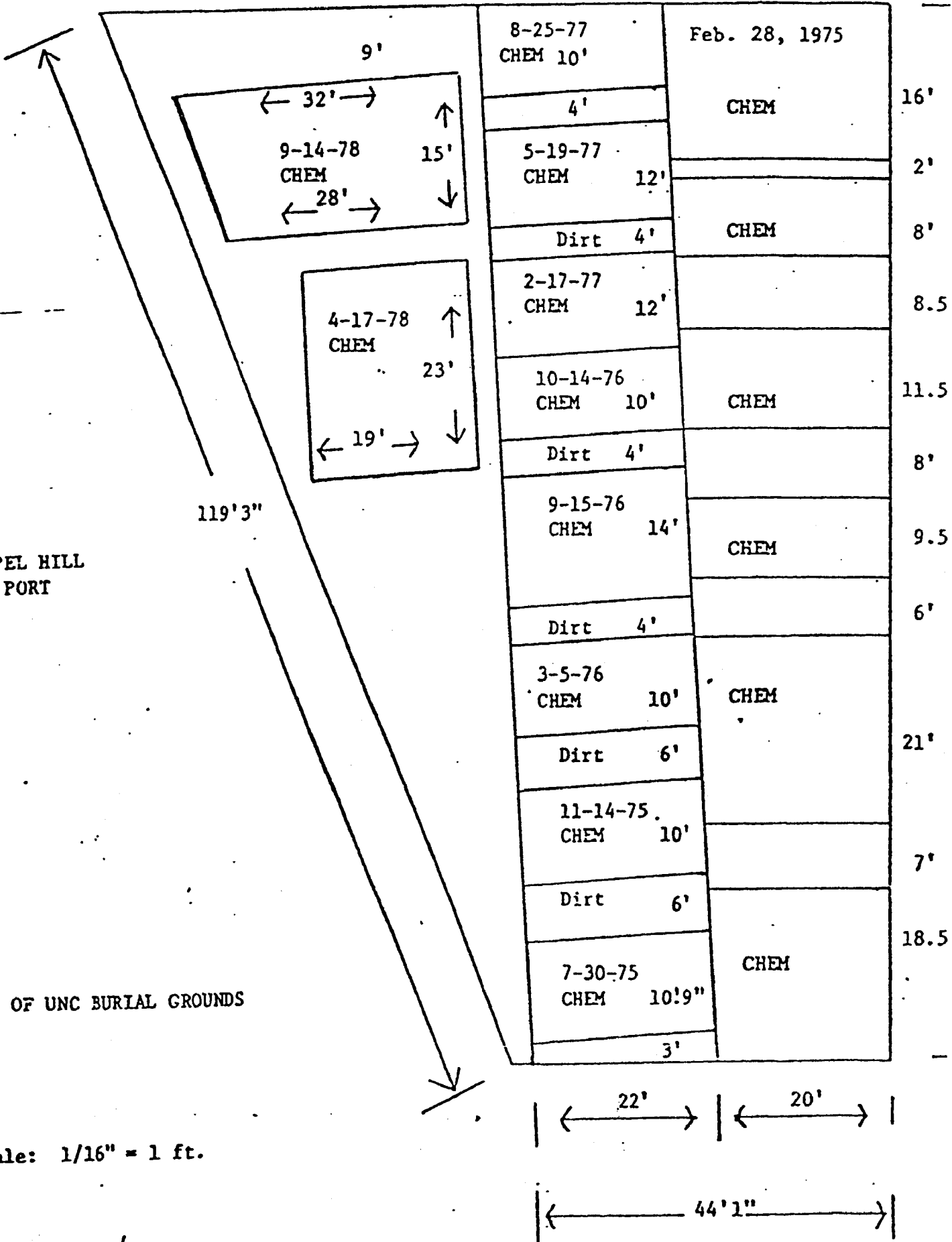
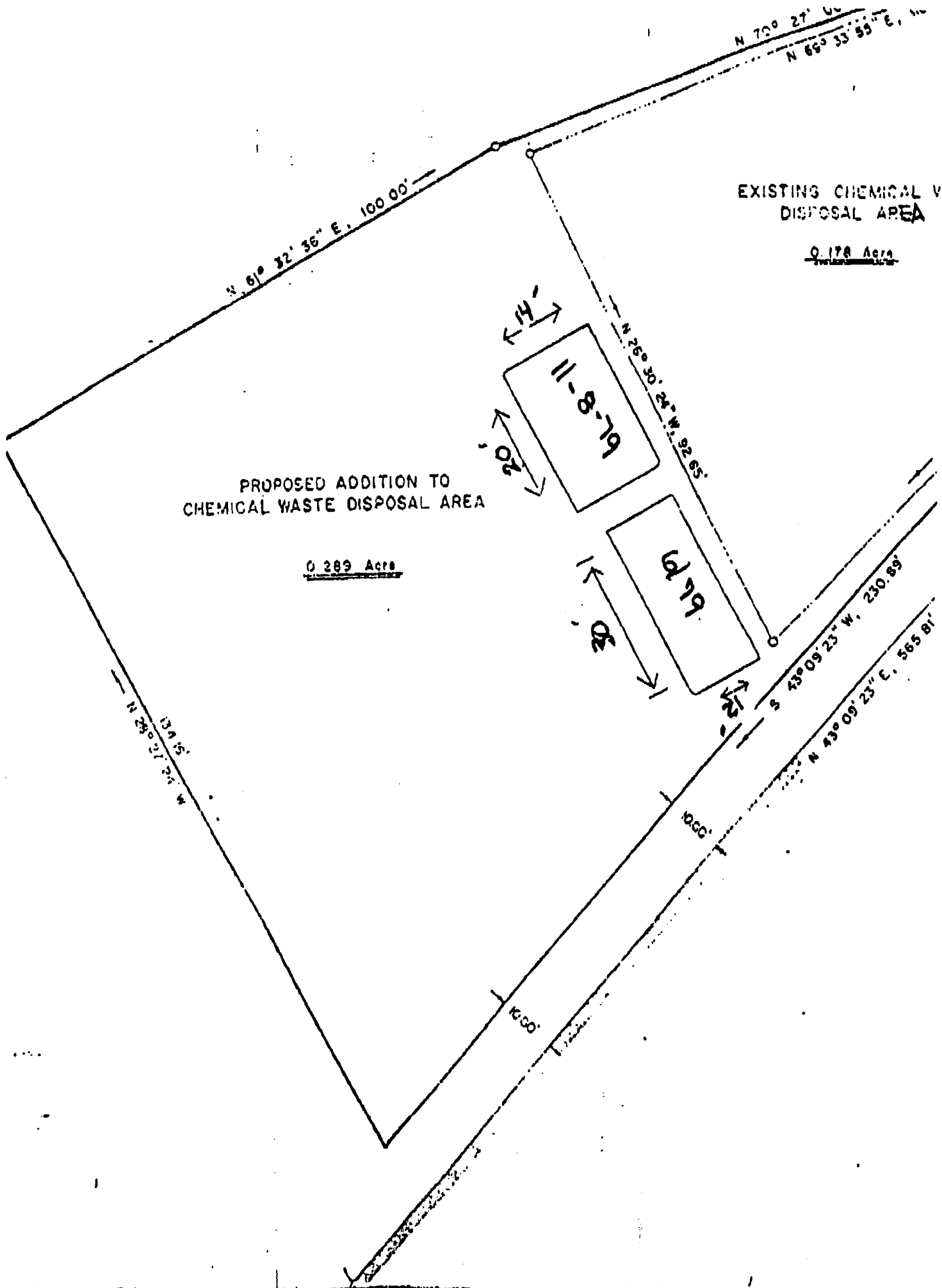


92' 10"

26' 9"





CHEMICAL WASTES COLLECTED FROM LABORATORIES
ON CAMPUS FOR DISPOSAL

2 11 1999

Organic waste (unknown)
Chloride color reagent (containing mercury)
Acetic acid
Nitric acid
Sulfuric acid
Hydrochloric acid
Formaldehyde
Inorganic waste (unknown)
Acetone
Ascarite (solid)
Trimethyl chlorosilane
Potassium hydroxide
— Chloroform
Butyl alcohol
Ether
Bromohexane
Iodine waste
Dyes
Acetic anhydride
Propionic acid
N-N-Dimethyl formamide
Butyl ether
Carbon tetrachloride
Hydrozine monohydrate
Phosphorus pentoxide (solid)
Ethyl acetate
Benzene
Xylene
Sodium chloride irrigation
Mercuric cyanide
Santovac 5 (vacuum pump fluid)
Isobutyl alcohol
Toluene
Cyclohexane
Sodium sulfate
Sodium bisulfite
Barium hydroxide
Sodium borate
Sodium bismuthate
Polyethylene glycol , 20,000
Iodomethane
Calcium chloride
E amino-n-caproic acid
Hydrozine hydrate
Mercury (atomic absorption standard) 1,000 ppm
2,4 Dichlorophenol
Silver waste
2-Propanol
Vacuum pump oil
Butanol lithium acetate
Benzaldehyde
Methanol
N-Heptane
iso-propylamine
Sodium borohydride
Oxalic acid
Ammonium hydroxide
1,2 Dichloro ethane
Ethyl hydrogen peroxide
Methyrene chloride
Phosphorus pentoxide
Mercuric nitrate
Perchloric acid 70%
Potassium cyanide
Chromic acid
Palladium
Bromine water
Pyridine
Arsenic (atomic absorption standard)
1,000 ppm
Bun (blood serum, mercury)
Hexane
Pentane
Dimethyl sulfoxide
Lithium acetate
Glycerin
Sodium dichromate
2-merpato ethanol
Silicone
Osmium tetroxide
Aniline
Picric acid
Bromobenzene
Biofluor
Hydroxide of hyamine
Choline bicarbonate
Propylene oxide
Ethylene glycol
Propane fuel cans ("empty")
1,4 Dioxane