

460V-3P-60HZ

FROM CUSTOMER'S BRANCH CIRCUIT PROTECTIVE DEVICE
MAXIMUM LOAD = 160 FLA

(CONTINUED FROM LOWER LEFT)

MCB

200AT
225AF

DB1

L1 L2 L3

(CONTINUED UPPER RIGHT)

L1 L2 L3

L1 L2 L3

(CONTINUED ON SHEET EE2)

MTR1 VACUUM BLOWER 101
15 HP @ 21.0 FLA

MTR12 VACUUM BLOWER 101
AFTERCOOLER FAN
1/2 HP @ 1.0 FLA

MTR2 PUMP PCP 102
3/4 HP @ 1.4 FLA

MTR3 PUMP TP 301
1 HP @ 1.8 FLA

MTR4 PUMP ETP 402
2 HP @ 3.4 FLA

MTR5 BLOWER B 401
5 HP @ 7.6 FLA

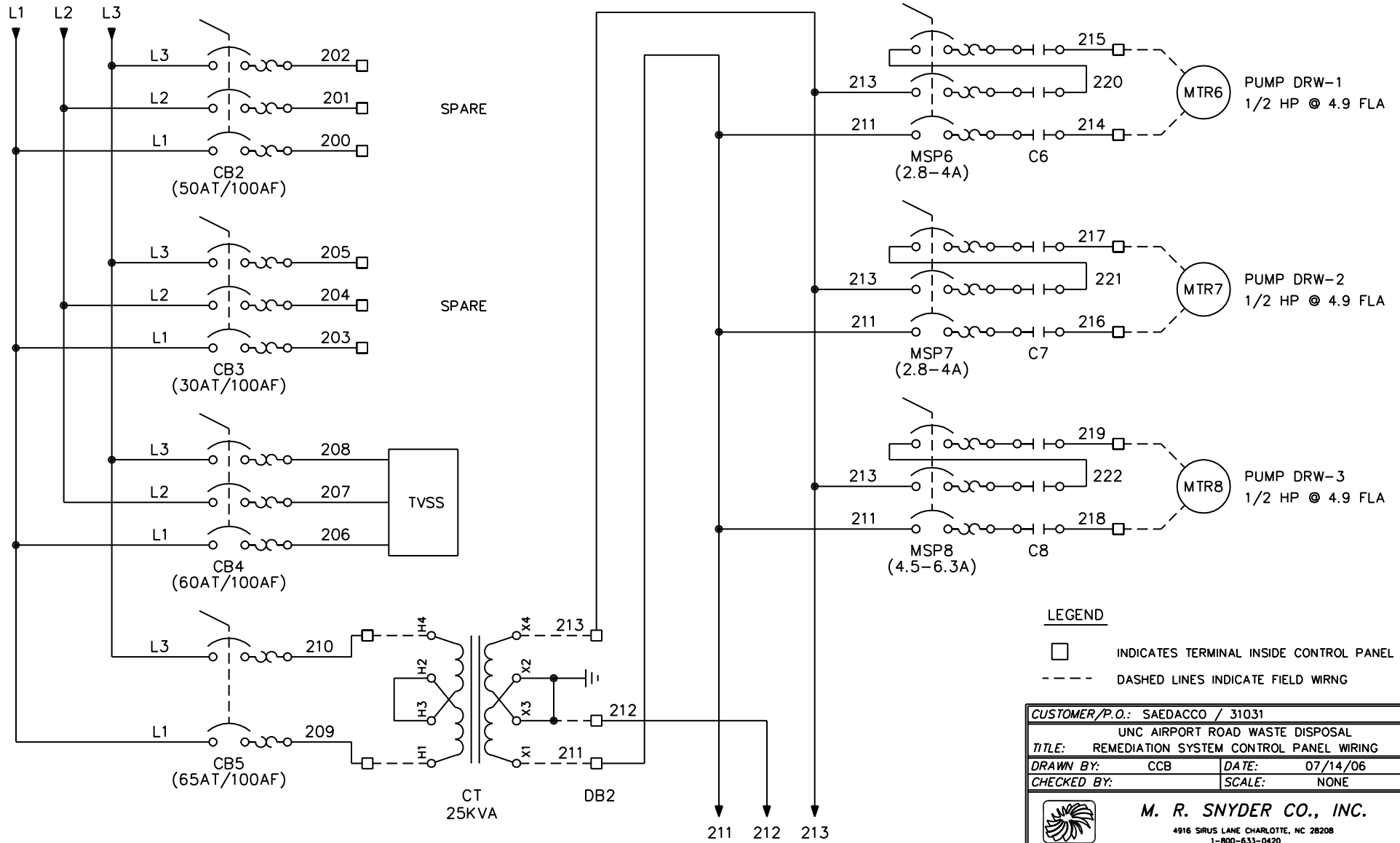
HTR UNIT HEATER UH-1
7.5 KW @ 9.4 FLA

LEGEND

- INDICATES TERMINAL INSIDE CONTROL PANEL
- - - DASHED LINES INDICATE FIELD WIRING

CUSTOMER/P.O.: SAEDACCO / 31031	
UNC AIRPORT ROAD WASTE DISPOSAL	
TITLE: REMEDIATION SYSTEM CONTROL PANEL WIRING	
DRAWN BY: CCB	DATE: 09/08/06
CHECKED BY:	SCALE: NONE
M. R. SNYDER CO., INC. <small>4916 SIRUS LANE, CHARLOTTE, NC 28208 1-800-633-0420</small>	
CAD#: 13214	DWG#: 13214-EE1 4

(CONTINUED FROM SHEET EE1)



LEGEND

- INDICATES TERMINAL INSIDE CONTROL PANEL
- DASHED LINES INDICATE FIELD WIRING

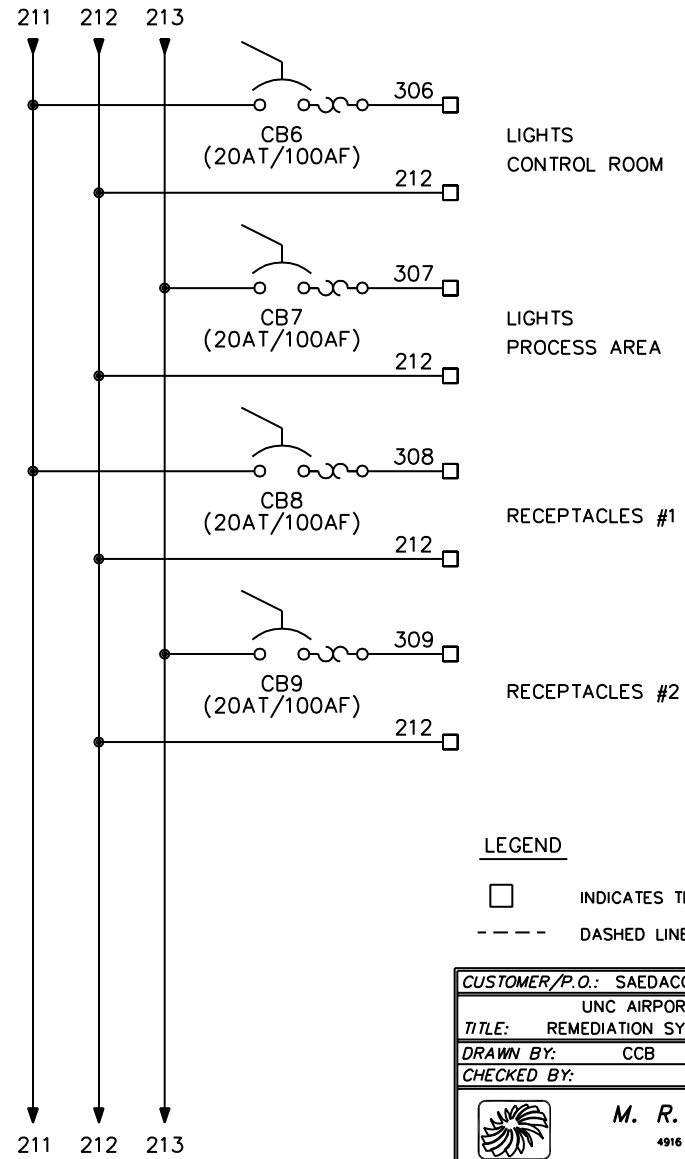
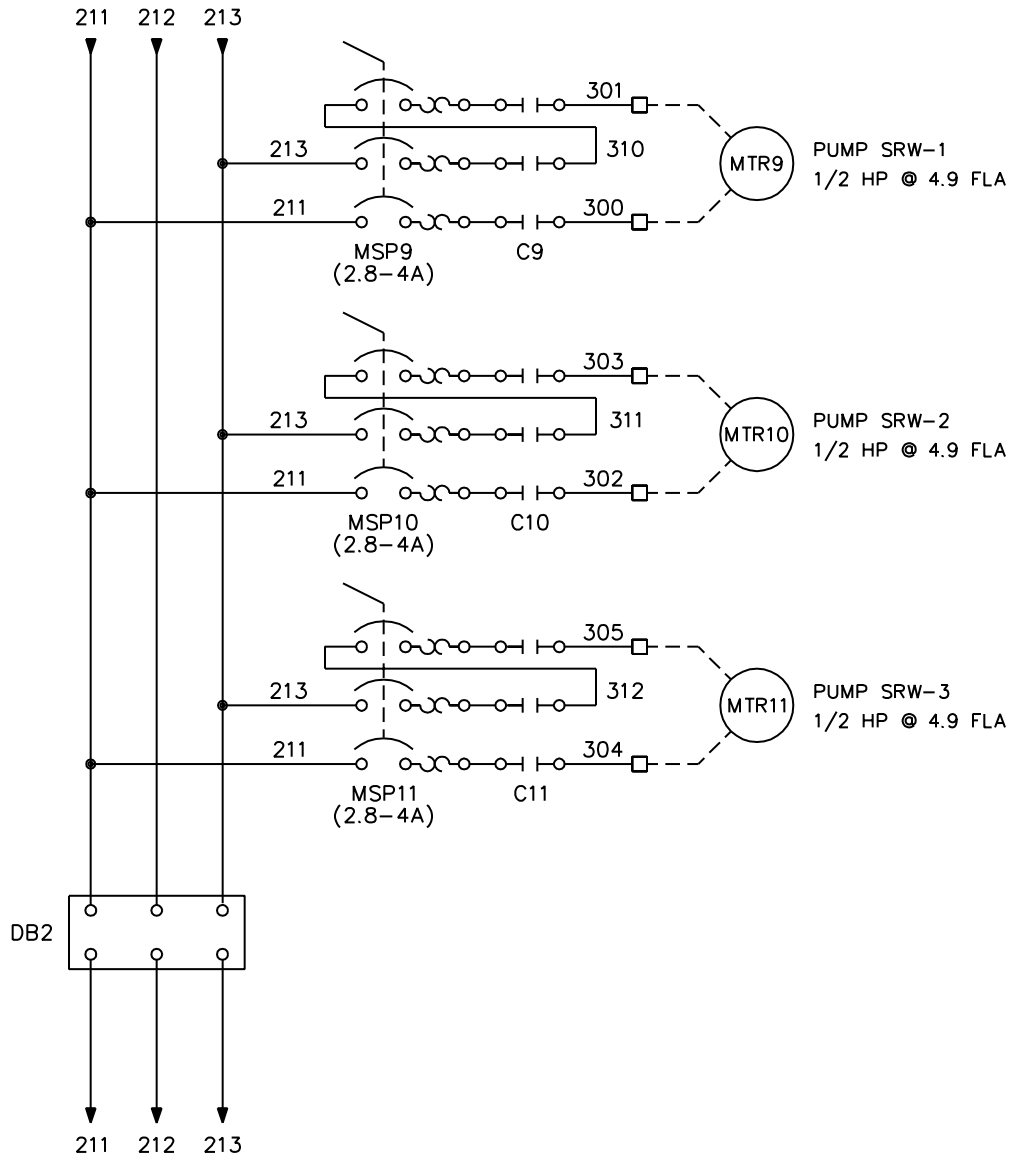
CUSTOMER/P.O.: SAEDACCO / 31031	
UNC AIRPORT ROAD WASTE DISPOSAL	
TITLE: REMEDIATION SYSTEM CONTROL PANEL WIRING	
DRAWN BY: CCB	DATE: 07/14/06
CHECKED BY:	SCALE: NONE


M. R. SNYDER CO., INC.
 4916 SIRUS LANE CHARLOTTE, NC 28208
 1-800-633-0420

CAD#:	13214	DWG#:	13214-EE2	4
-------	-------	-------	-----------	---

(CONTINUED ON SHEET EE3)

(CONTINUED FROM SHEET EE2)



LEGEND

- INDICATES TERMINAL INSIDE CONTROL PANEL
- - - - DASHED LINES INDICATE FIELD WIRNG

CUSTOMER/P.O.: SAEDACCO / 31031	
UNC AIRPORT ROAD WASTE DISPOSAL	
TITLE: REMEDIATION SYSTEM CONTROL PANEL WIRING	
DRAWN BY: CCB	DATE: 07/18/06
CHECKED BY:	SCALE: NONE



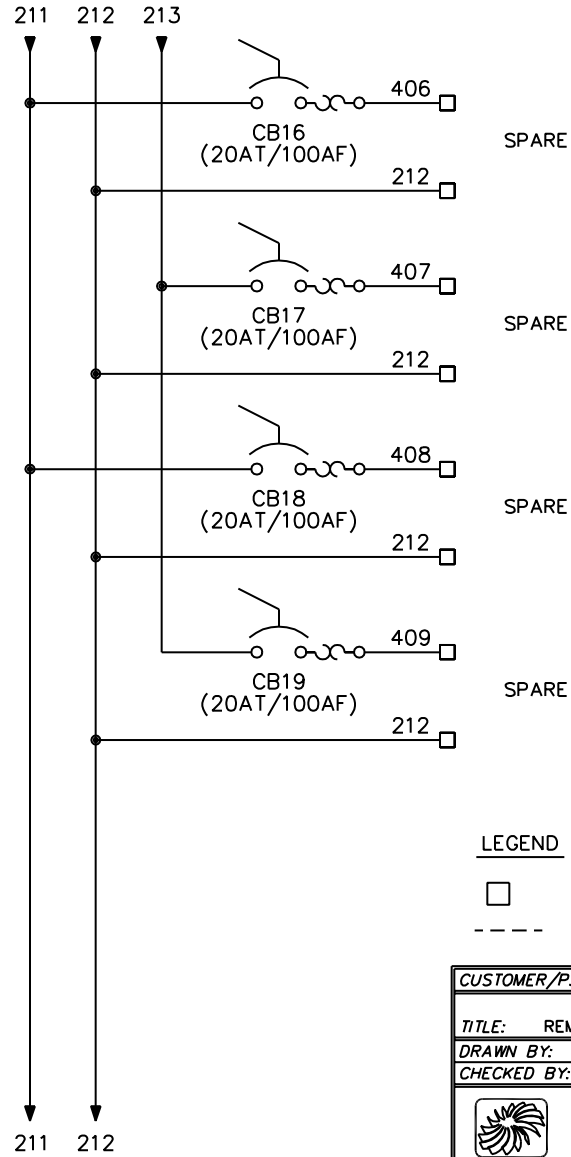
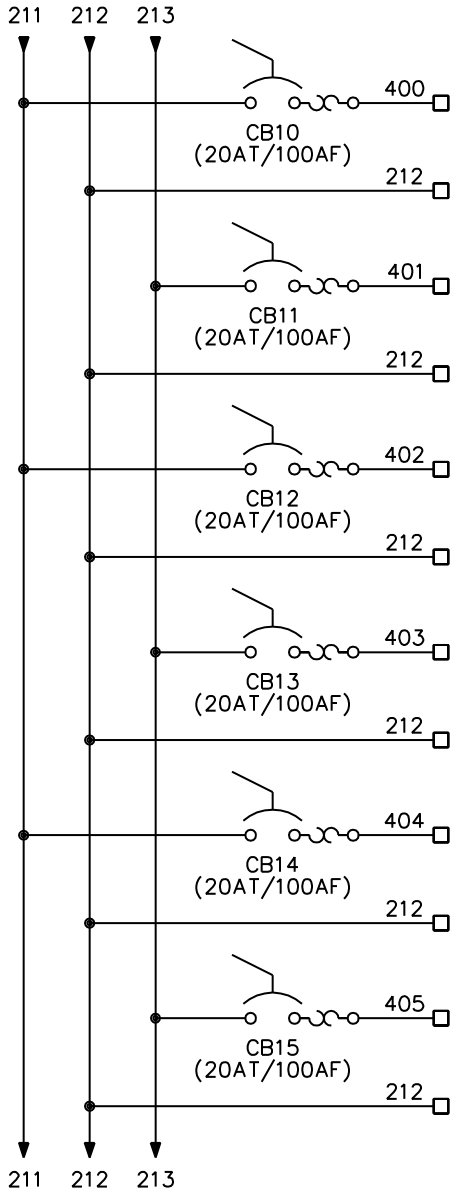
M. R. SNYDER CO., INC.

4916 SIRUS LANE CHARLOTTE, NC 28208
1-800-633-0420


CAD#:	13214	DWG#:	13214-EE3	4
-------	-------	-------	-----------	---

(CONTINUED ON SHEET EE4)

(CONTINUED FROM SHEET EE3)



LEGEND

-  INDICATES TERMINAL INSIDE CONTROL PANEL
- - - - DASHED LINES INDICATE FIELD WIRNG

CUSTOMER/P.O.: SAEDACCO / 31031	
UNC AIRPORT ROAD WASTE DISPOSAL	
TITLE: REMEDIATION SYSTEM CONTROL PANEL WIRING	
DRAWN BY: CCB	DATE: 07/18/06
CHECKED BY:	SCALE: NONE



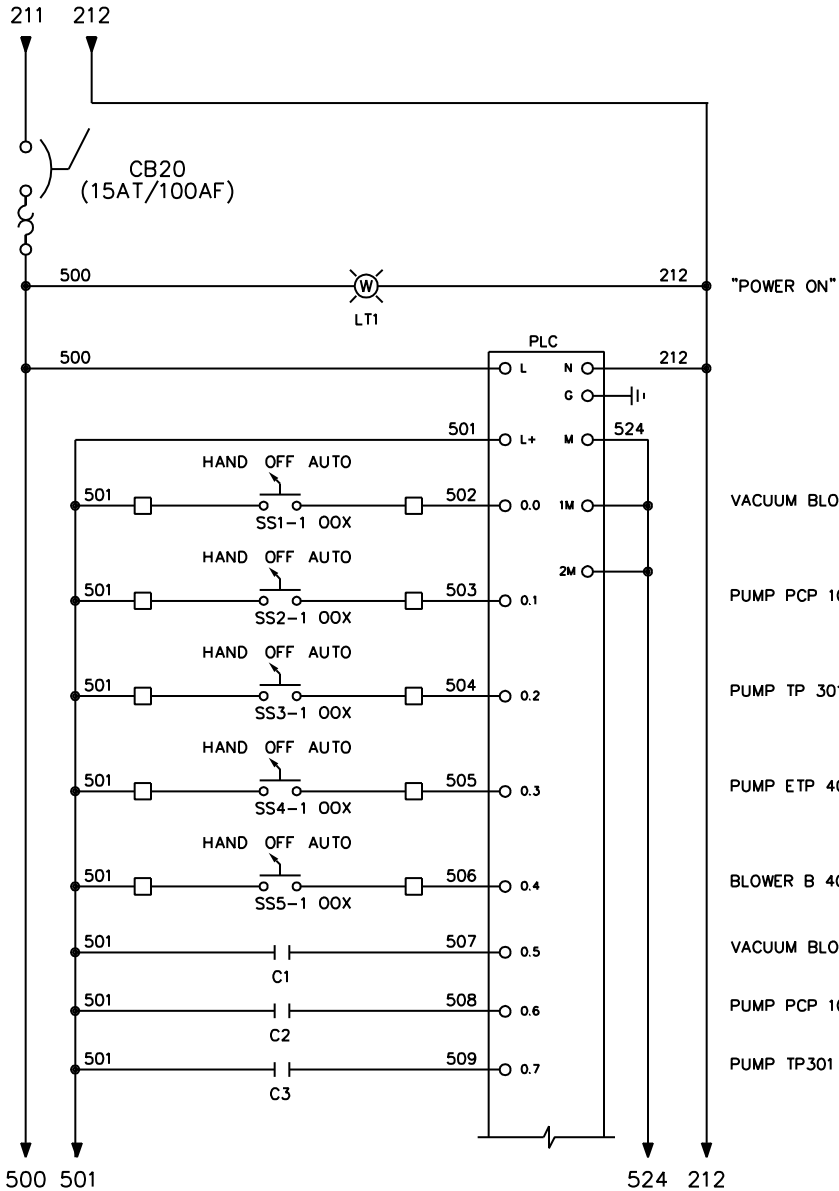
M. R. SNYDER CO., INC.

4916 SRUS LANE CHARLOTTE, NC 28208
1-800-633-0420

CAD#:	13214	DWG#:	13214-EE4	2
-------	-------	-------	-----------	---

(CONTINUED ON SHEET EE5)

(CONTINUED FROM SHEET EE4)



"POWER ON"

VACUUM BLOWER 101

PUMP PCP 102

PUMP TP 301

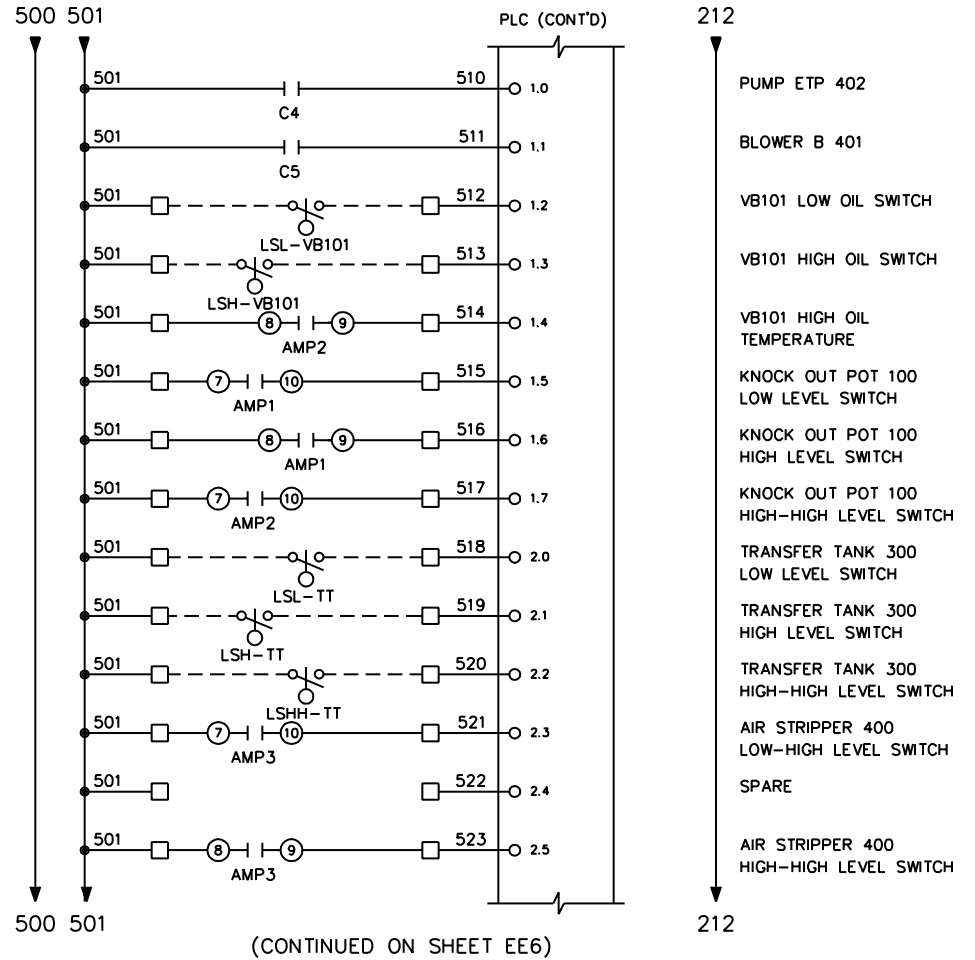
PUMP ETP 402

BLOWER B 401

VACUUM BLOWER 101

PUMP PCP 102


PUMP TP301



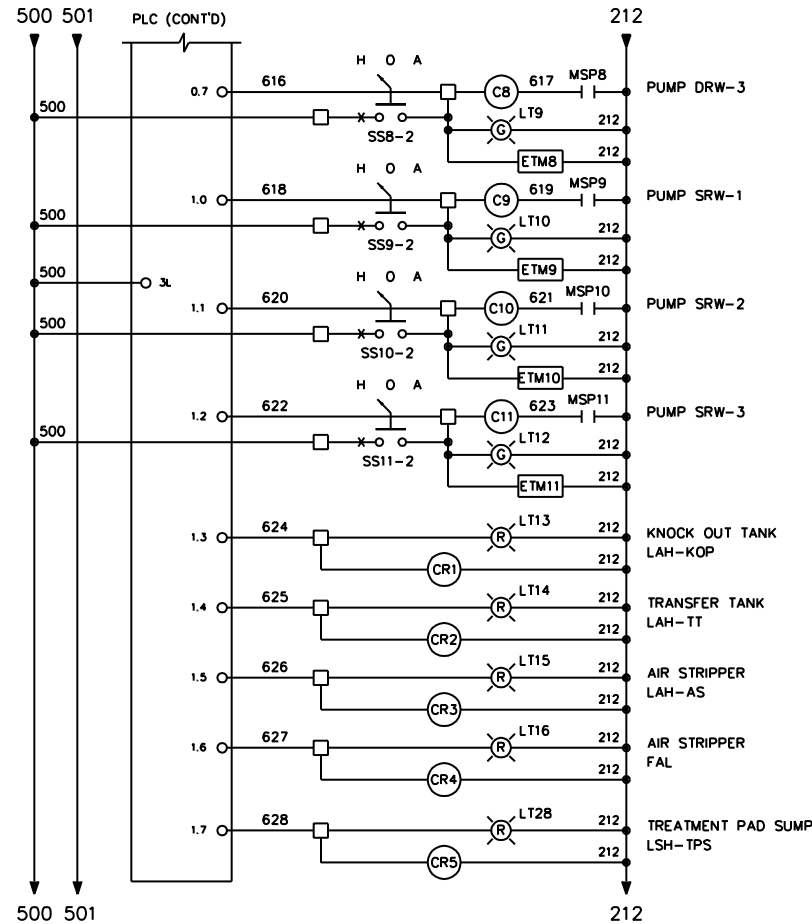
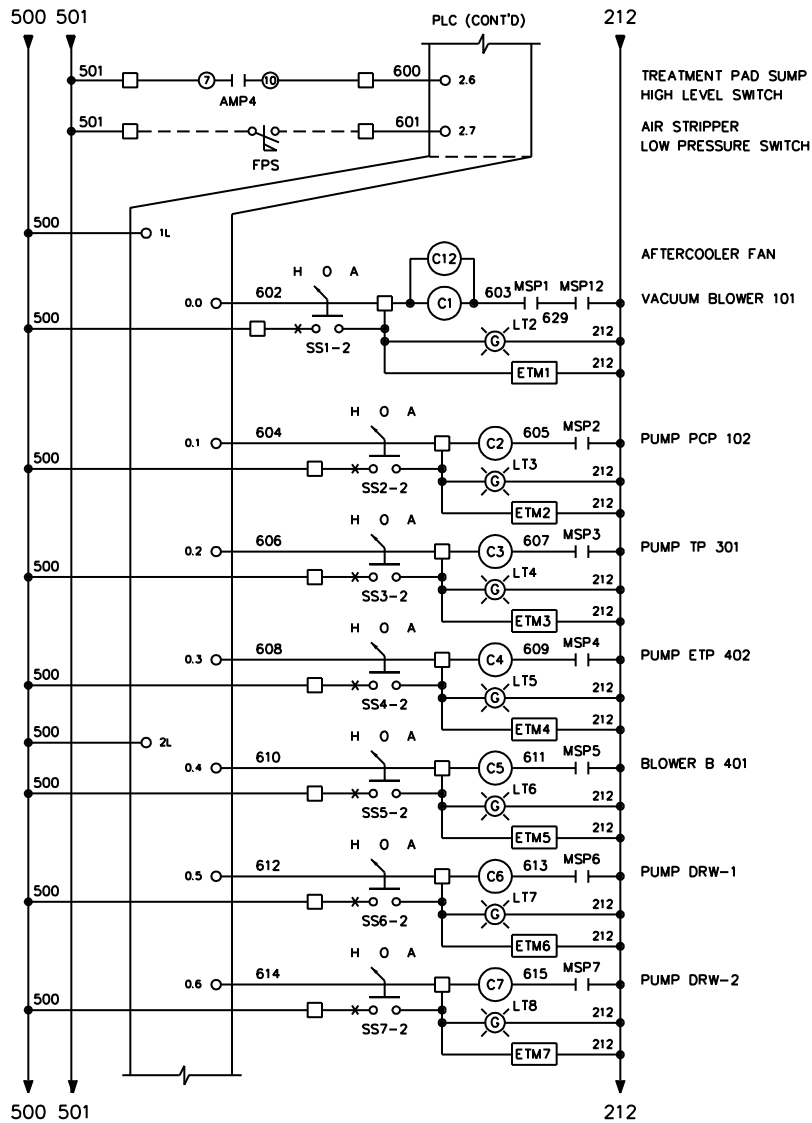
(CONTINUED ON SHEET EE6)

LEGEND

- INDICATES TERMINAL INSIDE CONTROL PANEL
- DASHED LINES INDICATE FIELD WIRNG

CUSTOMER/P.O.: SAEDACCO / 31031	
UNC AIRPORT ROAD WASTE DISPOSAL	
TITLE: REMEDIATION SYSTEM CONTROL PANEL WIRING	
DRAWN BY: CCB	DATE: 09/25/06
CHECKED BY:	SCALE: NONE
 M. R. SNYDER CO., INC. 4916 SIRUS LANE CHARLOTTE, NC 28208 1-800-633-0420	
CAD#: 13214	DWG#: 13214-EE5 6


(CONTINUED FROM SHEET EE5)



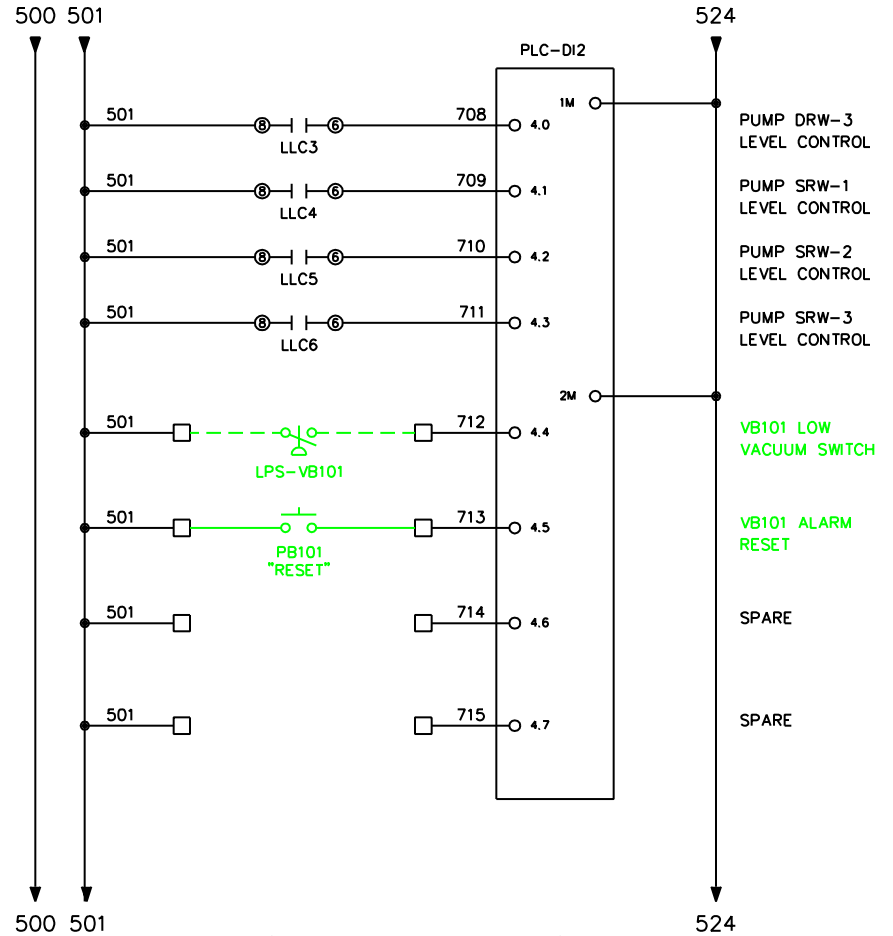
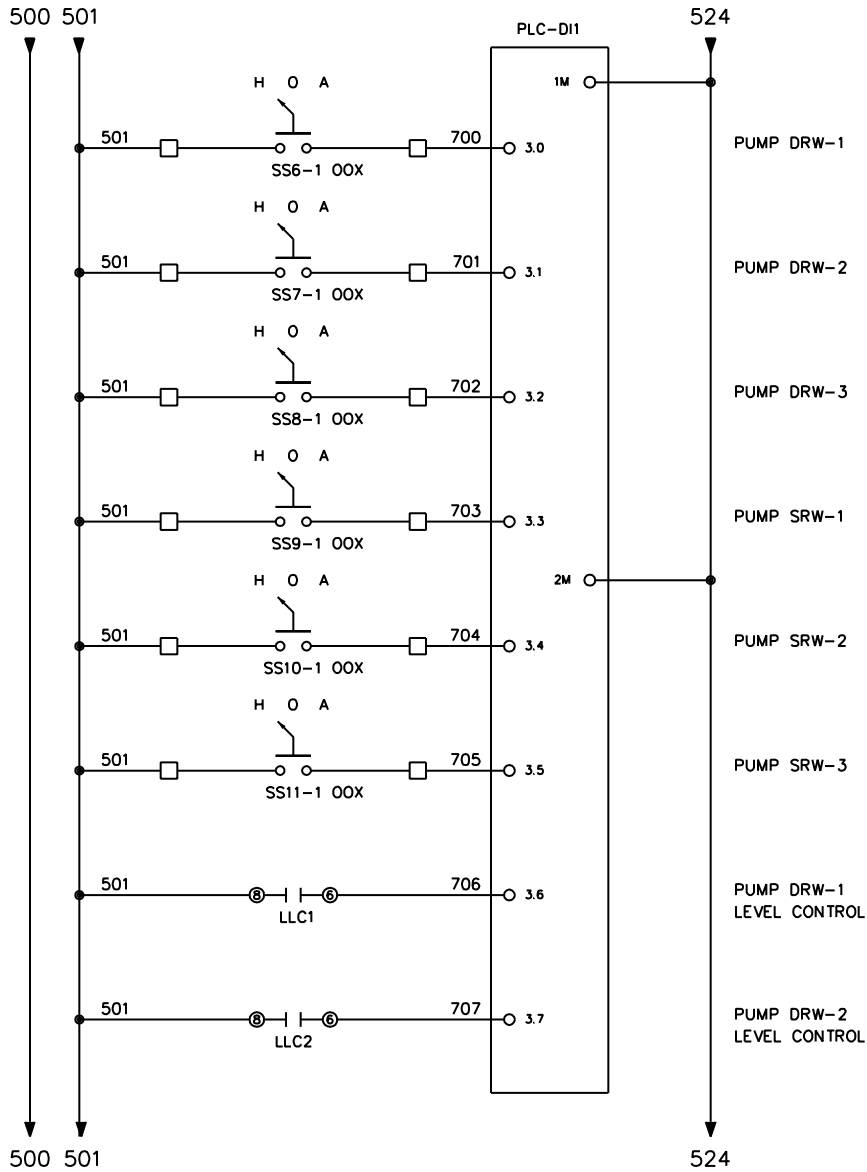
(CONTINUED ON SHEET EE7)

LEGEND

- INDICATES TERMINAL INSIDE CONTROL PANEL
- DASHED LINES INDICATE FIELD WIRNG

CUSTOMER/P.O.: SAEDACCO / 31031	
UNC AIRPORT ROAD WASTE DISPOSAL	
TITLE: REMEDIATION SYSTEM CONTROL PANEL WIRING	
DRAWN BY: CCB	DATE: 09/20/06
CHECKED BY:	SCALE: NONE
 M. R. SNYDER CO., INC. 4916 SIRUS LANE CHARLOTTE, NC 28208 1-800-633-0420	
CAD#: 13214	DWG#: 13214-EE6 5


(CONTINUED FROM SHEET EE6)



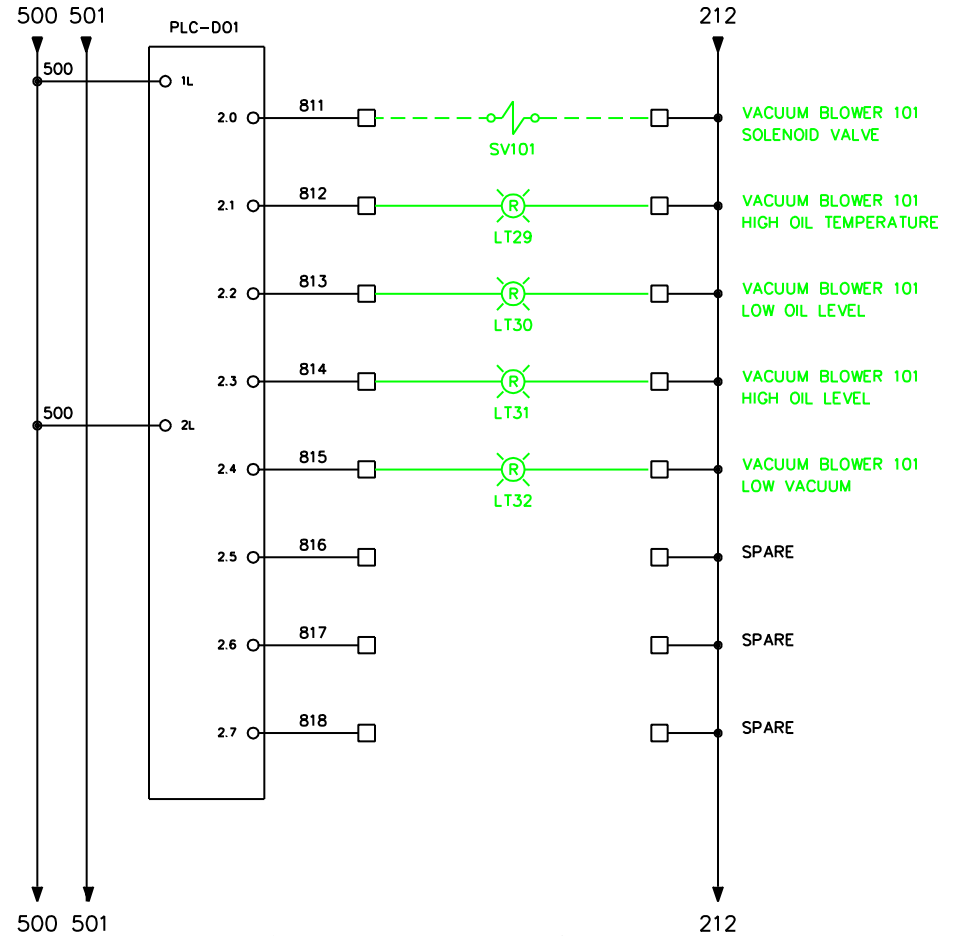
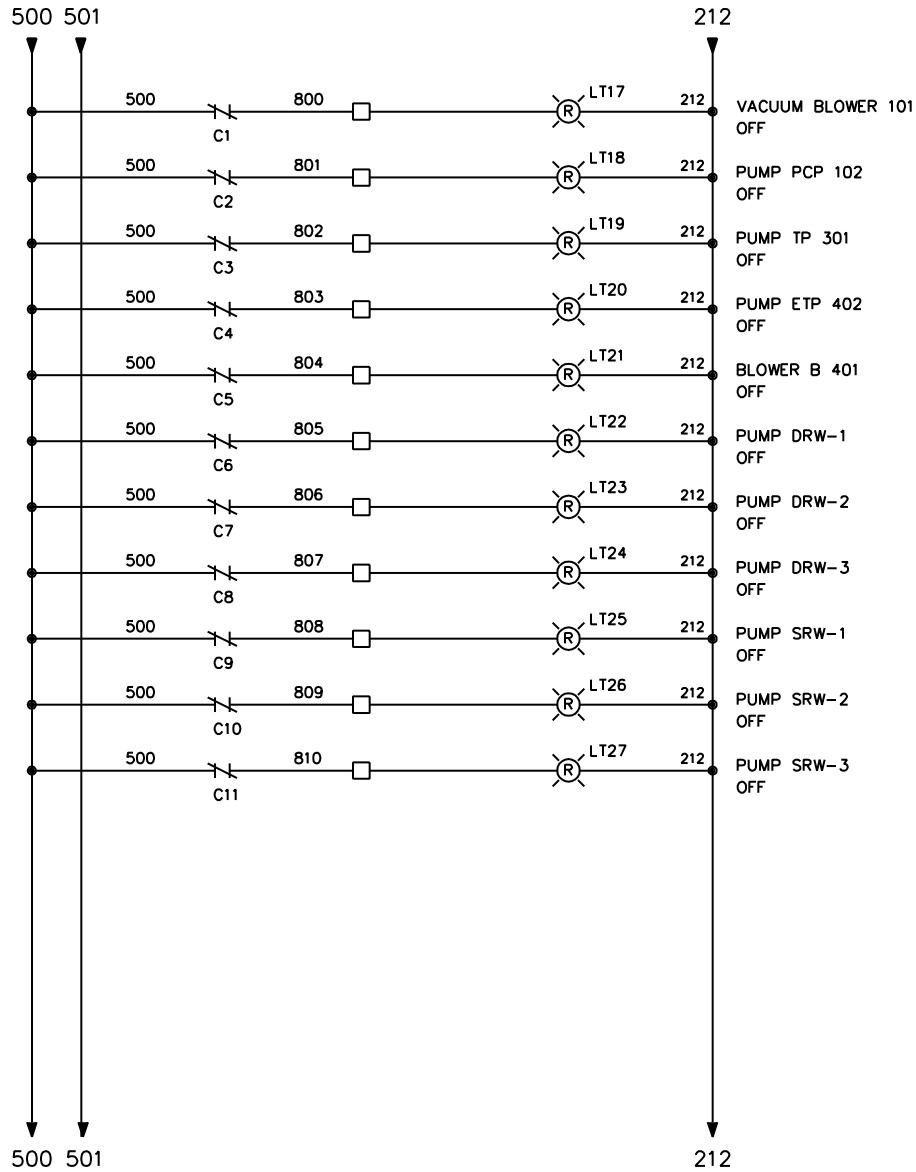
(CONTINUED ON SHEET EE8)

LEGEND

- INDICATES TERMINAL INSIDE CONTROL PANEL
- - - DASHED LINES INDICATE FIELD WIRNG

CUSTOMER/P.O.: SAEDACCO / 31031	
UNC AIRPORT ROAD WASTE DISPOSAL	
TITLE: REMEDIATION SYSTEM CONTROL PANEL WIRING	
DRAWN BY: CCB	DATE: 09/12/06
CHECKED BY:	SCALE: NONE
 M. R. SNYDER CO., INC. 4916 SRUS LANE CHARLOTTE, NC 28208 1-800-633-0420	
CAD#:	13214
DWG#:	13214-EE7 5


(CONTINUED FROM SHEET EE7)



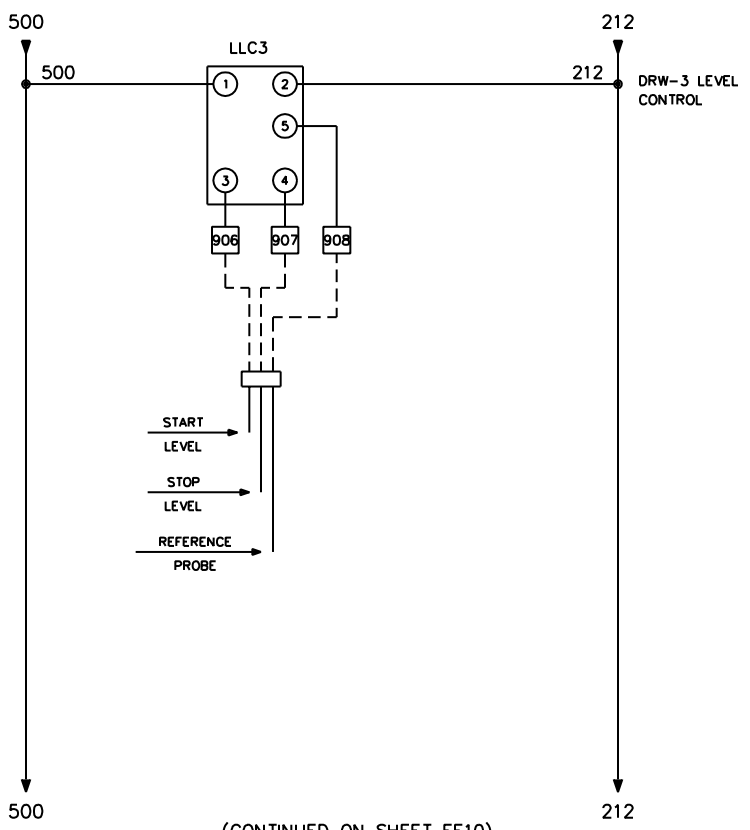
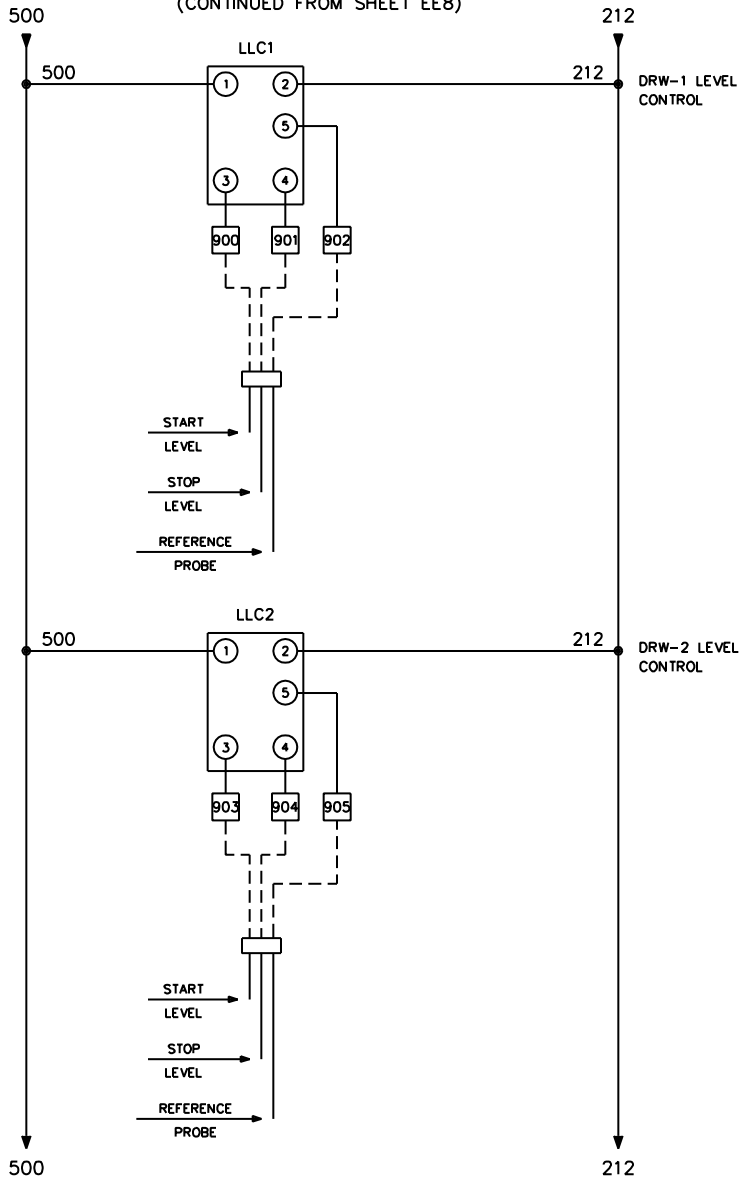
(CONTINUED ON SHEET EE9)

LEGEND

- INDICATES TERMINAL INSIDE CONTROL PANEL
- - - - DASHED LINES INDICATE FIELD WIRNG

CUSTOMER/P.O.: SAEDACCO / 31031	
UNC AIRPORT ROAD WASTE DISPOSAL	
TITLE: REMEDIATION SYSTEM CONTROL PANEL WIRING	
DRAWN BY: CCB	DATE: 09/13/06
CHECKED BY:	SCALE: NONE
 M. R. SNYDER CO., INC. 4916 SIRUS LANE CHARLOTTE, NC 28208 1-800-633-0420	
CAD#: 13214	DWG#: 13214-EE8 3

(CONTINUED FROM SHEET EE8)



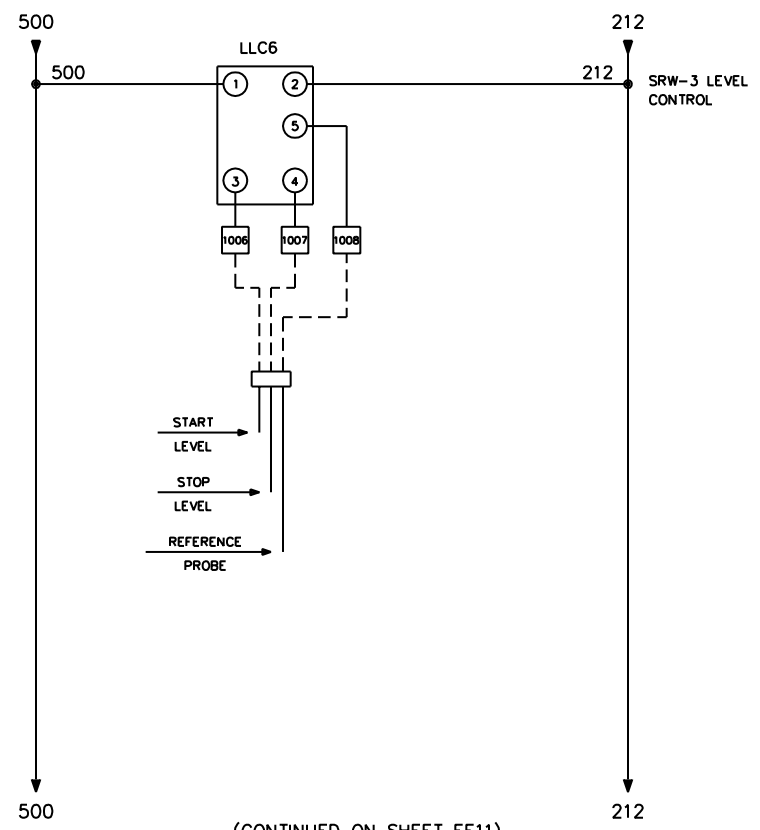
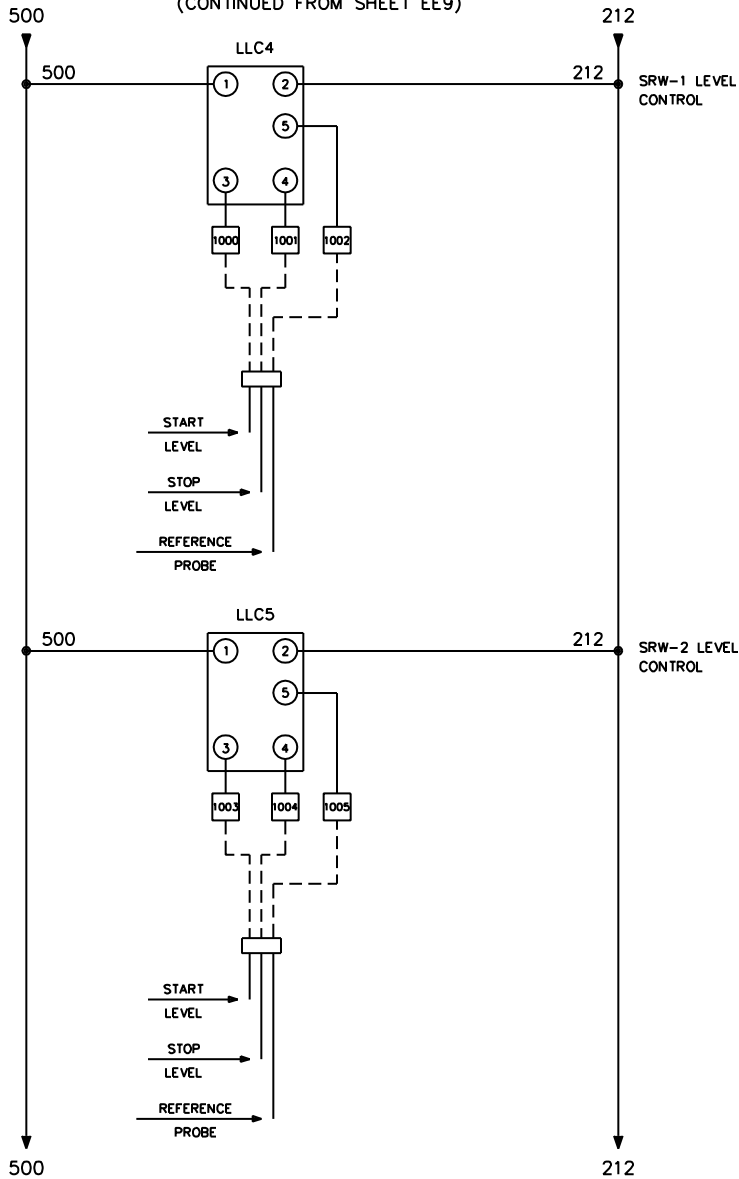
(CONTINUED ON SHEET EE10)

LEGEND

- INDICATES TERMINAL INSIDE CONTROL PANEL
- - - - DASHED LINES INDICATE FIELD WIRNG

CUSTOMER/P.O.: SAEDACCO / 31031	
UNC AIRPORT ROAD WASTE DISPOSAL	
TITLE: REMEDIATION SYSTEM CONTROL PANEL WIRING	
DRAWN BY: CCB	DATE: 07/19/06
CHECKED BY:	SCALE: NONE
M. R. SNYDER CO., INC. 4916 SIRUS LANE CHARLOTTE, NC 28208 1-800-633-0420	
CAD#: 13214	DWG#: 13214-EE9 2

(CONTINUED FROM SHEET EE9)

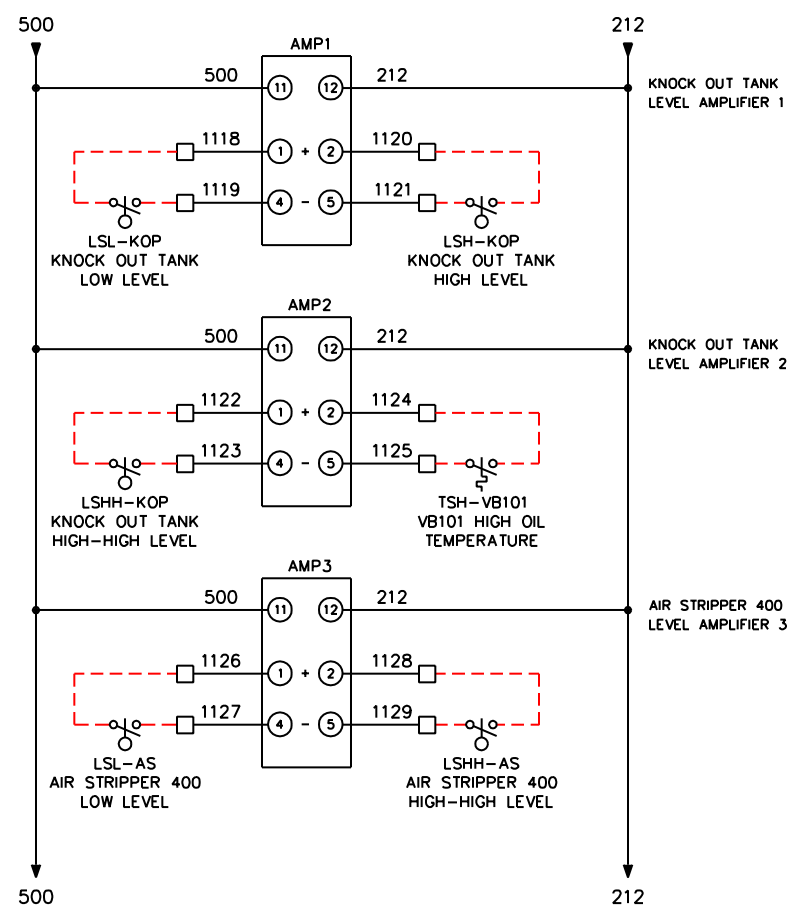
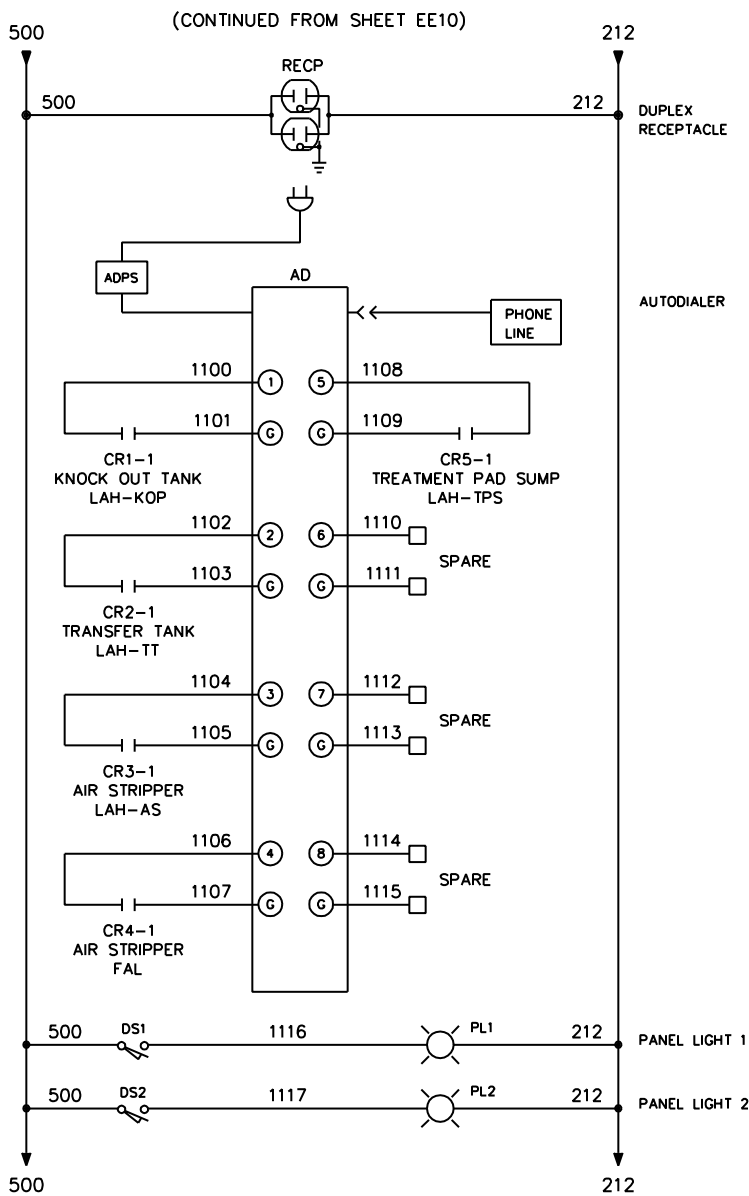


(CONTINUED ON SHEET EE11)

LEGEND


- INDICATES TERMINAL INSIDE CONTROL PANEL
- - - - DASHED LINES INDICATE FIELD WIRNG

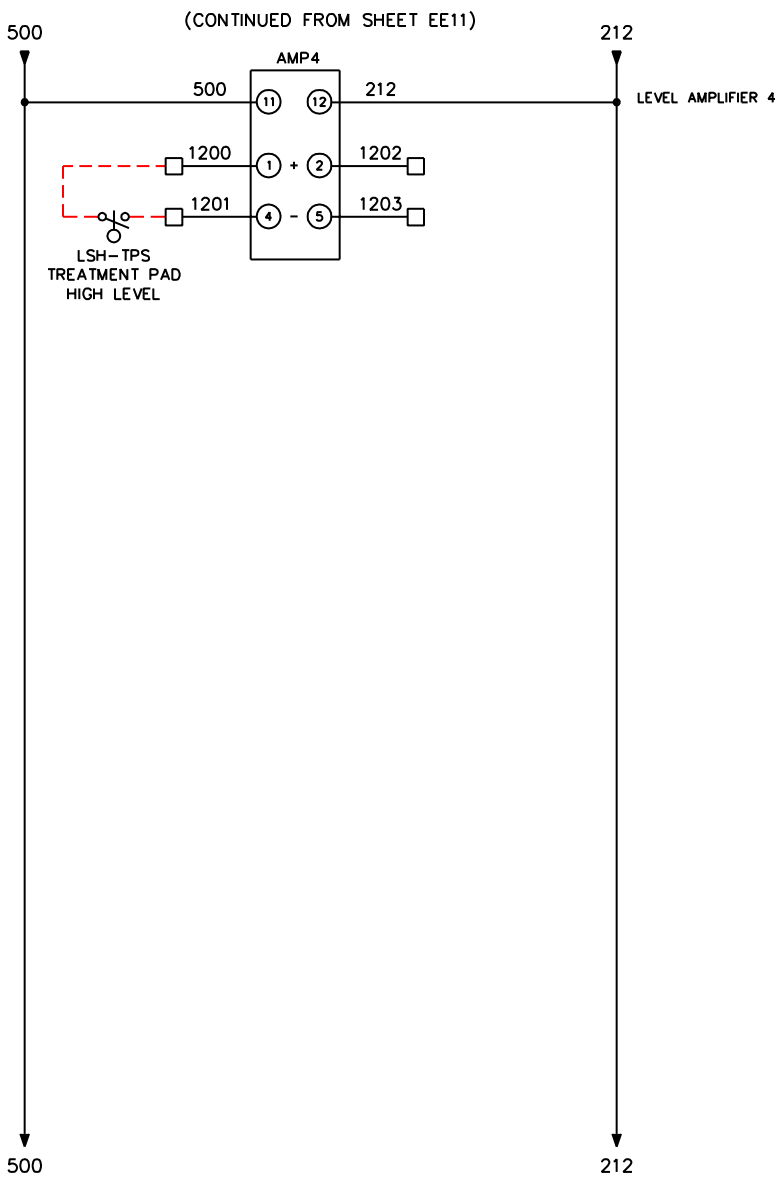
CUSTOMER/P.O.: SAEDACCO / 31031	
UNC AIRPORT ROAD WASTE DISPOSAL	
TITLE: REMEDIATION SYSTEM CONTROL PANEL WIRING	
DRAWN BY: CCB	DATE: 07/19/06
CHECKED BY:	SCALE: NONE
M. R. SNYDER CO., INC. <small>4916 SIRUS LANE CHARLOTTE, NC 28208 1-800-633-0420</small>	
CAD#: 13214	DWG#: 13214-EE10 1



LEGEND


□ INDICATES TERMINAL INSIDE CONTROL PANEL
 - - - DASHED LINES INDICATE FIELD WRNG

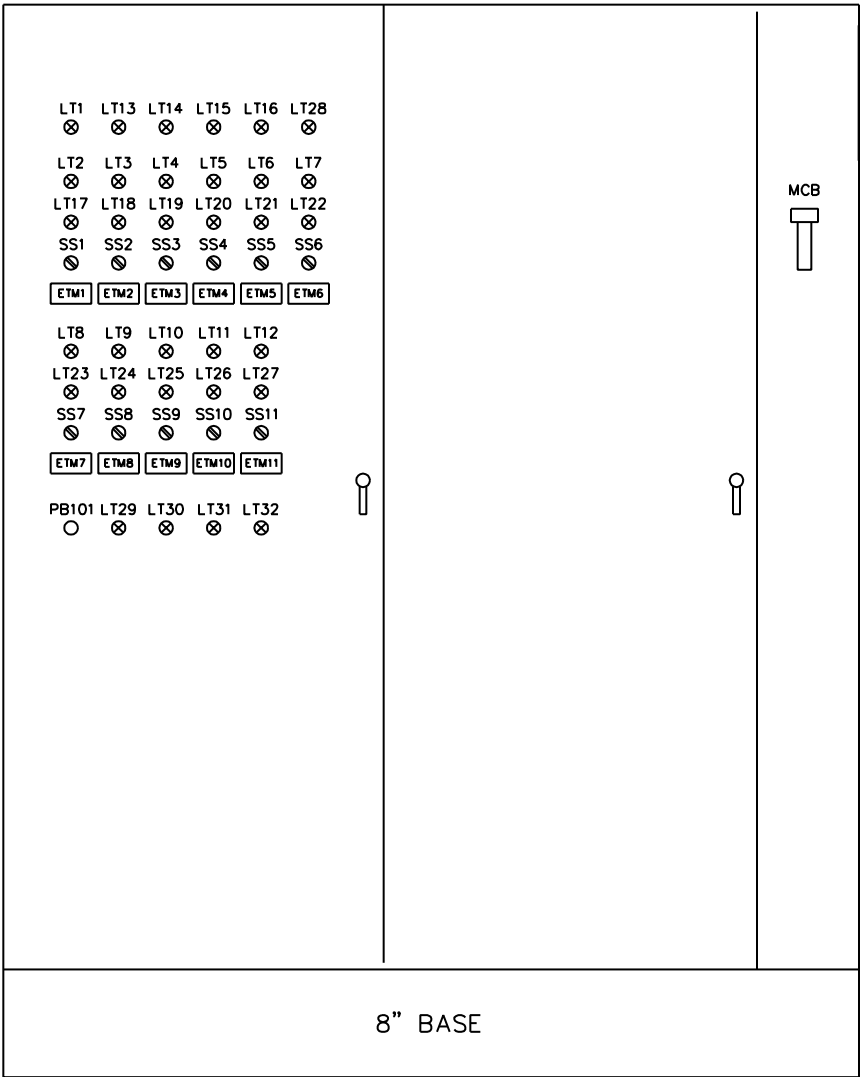
CUSTOMER/P.O.: SAEDACCO / 31031	
UNC AIRPORT ROAD WASTE DISPOSAL	
TITLE: REMEDIATION SYSTEM CONTROL PANEL WIRING	
DRAWN BY: CCB	DATE: 09/20/06
CHECKED BY:	SCALE: NONE
 M. R. SNYDER CO., INC. 4916 SIRUS LANE CHARLOTTE, NC 28208 1-800-633-0420	
CAD#:	13214
DWG#:	13214-EE11 6




LEGEND

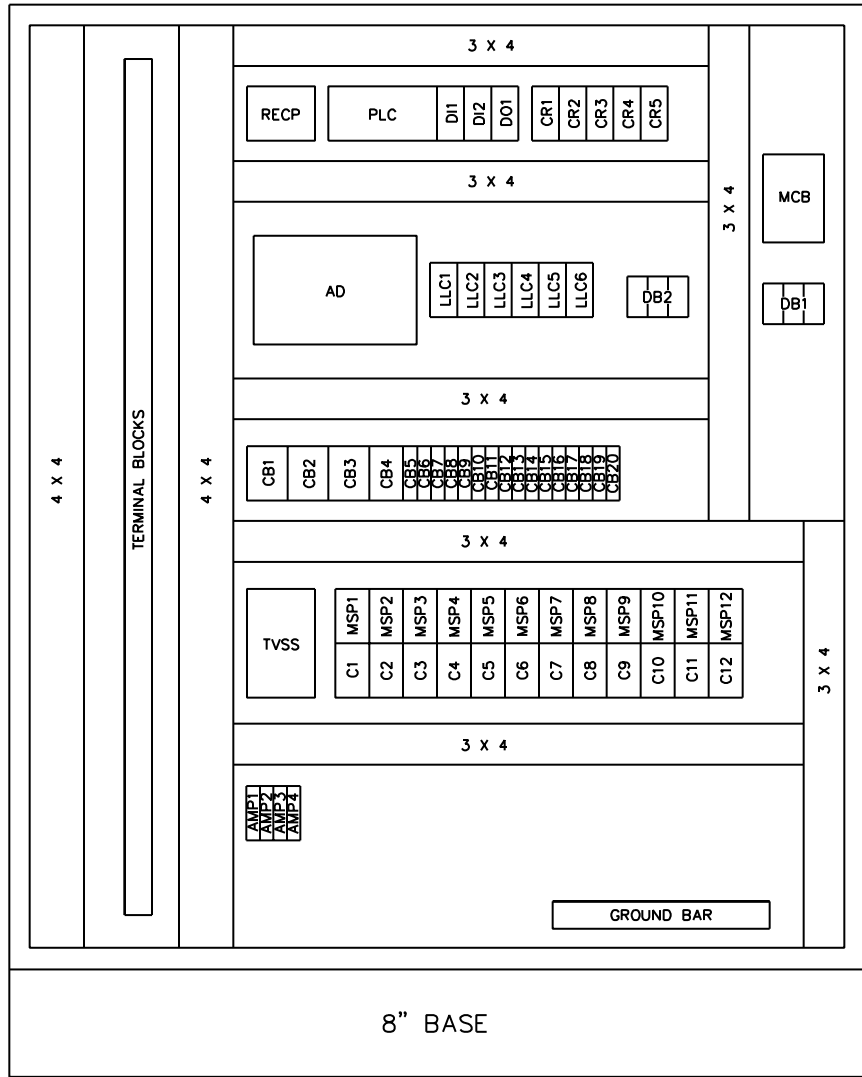
- INDICATES TERMINAL INSIDE CONTROL PANEL
- DASHED LINES INDICATE FIELD WIRNG

CUSTOMER/P.O.: SAEDACCO / 31031	
UNC AIRPORT ROAD WASTE DISPOSAL	
TITLE: REMEDIATION SYSTEM CONTROL PANEL WIRING	
DRAWN BY: CCB	DATE: 09/20/06
CHECKED BY:	SCALE: NONE
 M. R. SNYDER CO., INC. <small>4916 SIRUS LANE CHARLOTTE, NC 28208 1-800-633-0420</small>	
CAD#:	13214
DWG#:	13214-EE12 1

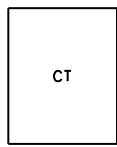


DOOR LAYOUT
71"+8"=79"H X 63"W X 16"D


CUSTOMER/P.O.: SAEDACCO / 31031	
UNC AIRPORT ROAD WASTE DISPOSAL	
TITLE: REMEDIATION SYSTEM PANEL DOOR LAYOUT	
DRAWN BY: CCB	DATE: 09/13/06
CHECKED BY:	SCALE: NONE
 M. R. SNYDER CO., INC. 4916 SRUS LANE CHARLOTTE, NC 28208 1-800-633-0420	
CAD#: 13214	DWG#: 13214-EP1 4




INTERIOR LAYOUT
 71"+8"=79"H X 63"W X 16"D



TRANSFORMER TO BE
 MOUNTED IN THE FIELD
 WEIGHT = 250#

CUSTOMER/P.O.: SAEDACCO / 31031	
UNC AIRPORT ROAD WASTE DISPOSAL	
TITLE: REMEDIATION SYSTEM PANEL INTERIOR LAYOUT	
DRAWN BY: CCB	DATE: 09/20/06
CHECKED BY:	SCALE: NONE
 M. R. SNYDER CO., INC. 4916 SIRUS LANE CHARLOTTE, NC 28208 1-800-633-0420	
CAD#: 13214	DWG#: 13214-EP2 5

A	B	C	D	E	F	G	H	J	K	L	M	N	P	O	R	S	T	U	V	W	X	Y
ITEM	QTY	DESCRIPTION																				
1	1	RITTAL ENCLOSURE 71"H X 63"W X 16"D CONSISTING OF: (1) #8984.500 ENCLOSURE, (1) #8884.500 ENCLOSURE, #8184.235 SIDEWALL, (2) #8602.80 FRONT & REAR BASE, (2) #8602.040 SIDE BASE, (2) LIGHT #9968.112 AND (2) DOOR SWITCH #4127.000																				
2	1	SIEMENS CIRCUIT BREAKER, 200AMP, 3-POLE, #FD63B200WL WITH HANDLE #FHOH, OPERATOR #FHOFBO AND CABLE #HOF060																				
	3	ERICO DISTRIBUTION BLOCK, SINGLE POLE, 230A, #569160																				
	3	ERICO DISTRIBUTION BLOCK, SINGLE POLE, 80A, #569010																				
	1	ACME TRANSFORMER, 25KVA, #T2-53518-3S, 480V PRIMARY, 120/240V SECONDARY																				
	1	SIEMENS CIRCUIT BREAKER, 3-POLE, 15A, #COD315																				
	1	SIEMENS CIRCUIT BREAKER, 3-POLE, 50A, #COD350																				
	1	SIEMENS CIRCUIT BREAKER, 3-POLE, 30A, #COD330																				
	1	SIEMENS CIRCUIT BREAKER, 3-POLE, 60A, #COD360																				
	1	SIEMENS CIRCUIT BREAKER, 2-POLE, 70A, #COD270																				
	14	SIEMENS CIRCUIT BREAKER, 1-POLE, 20A, #5SX2120-8																				
	1	SIEMENS CIRCUIT BREAKER, 1-POLE, 15A, #5SX2118-7																				
	1	SIEMENS 15HP @ 460/3/60 STARTER #3RA1125-4CA26-1AK6 (17-22A)																				
	1	SIEMENS 3/4HP @ 460/3/60 STARTER #3RA1125-1AA23-1AK6 (1.0-1.6A)																				
	1	SIEMENS 1HP @ 460/3/60 STARTER #3RA1125-1BA23-1AK6 (1.4-2.0A)																				
	1	SIEMENS 2HP @ 460/3/60 STARTER #3RA1125-1EA23-1AK6 (2.8-4.0A)																				
	1	SIEMENS 5HP @ 460/3/60 STARTER #3RA1125-1HA23-1AK6 (5.5-8.0A)																				
	1	SIEMENS 1/2HP @ 230/1/60 STARTER #3RA1125-1GA23-1AK6 (4.5-6.3A)																				
	1	SIEMENS 1/2HP @ 230/1/60 STARTER #3RA1125-1GA23-1AK6 (4.5-6.3A)																				
	1	SIEMENS 1/2HP @ 230/1/60 STARTER #3RA1125-1GA23-1AK6 (4.5-6.3A)																				
	1	SIEMENS 1/2HP @ 230/1/60 STARTER #3RA1125-1GA23-1AK6 (4.5-6.3A)																				
	1	SIEMENS 1/2HP @ 230/1/60 STARTER #3RA1125-1GA23-1AK6 (4.5-6.3A)																				
	1	SIEMENS 1/2HP @ 230/1/60 STARTER #3RA1125-1GA23-1AK6 (4.5-6.3A)																				
	5	SIEMENS RELAY, DPDT, 120VAC #3TX7114-5LF13 WITH SOCKET #3TX7144-1E6																				
	1	SENSAPHONE AUTODIALER MODEL FGD2000																				
	1	WEIDMULLER DUPLEX OUTLET, 15A #9915490000																				
	1	SIEMENS S7-200 PROGRAMMABLE CONTROLLER #6ES7216-2BD23-0XB0																				
	2	SIEMENS S7-200 EXPANSION DIGITAL INPUT, 8-POINT, #6ES7221-1BF22-0XAO																				
	1	SIEMENS S7-200 EXPANSION DIGITAL OUTPUT, 8-POINT, #6ES7222-1HF22-0XAO																				
	1	AD PILOT LIGHT, 120VAC, #ECX1056-120, WHITE																				
	1	AD PILOT LIGHT, 120VAC, #ECX1052-120, GREEN																				
	16	AD PILOT LIGHT, 120VAC, #ECX1051-120, RED																				
	11	AD SELECTOR SWITCH, 3-POSITION, #GCX1320-22 WITH "HAND-OFF-AUTO" NAMEPLATE																				
	11	REDINGTON HOUR METER, 99999.9 HOURS, 120VAC, #722-0002 (3AB99)																				
	1	E-CLIPS TRANSIENT VOLTAGE SURGE SUPPRESSOR #PTS480-Y																				
	6	WARRICK LEVEL CONTROL RELAY, 120VAC, #16MC1A0 WITH SOCKET #3TX7144-1E2																				
	1	SIEMENS 1/2HP @ 460/3/60 STARTER #3RA1125-OKA23-1AK6 (0.9-1.25A)																				
	4	TURCK AMPLIFIER #IM1-22EX-R																				
	1	AD PUSHBUTTON, BLACK, #GCX1110 WITH "VB101 RESET" NAMEPLATE																				
	4	AD PILOT LIGHT, 120VAC, #ECX1051-120, RED																				

CUSTOMER/P.O.: SAEDACCO / 31031	
UNC AIRPORT ROAD WASTE DISPOSAL	
TITLE: REMEDIATION SYSTEM PANEL BILL OF MATERIAL	
DRAWN BY: CCB	DATE: 09/20/06
CHECKED BY:	SCALE: NONE
 M. R. SNYDER CO., INC. 4916 SIRUS LANE CHARLOTTE, NC 28208 1-800-633-0420	
CAD#: 13214	DWG#: 13214-EP3 6