

# 2019 Communicable Disease Response Plan

Mary Beth Koza, MBA

Executive Director - Environment, Health & Safety

Responsible Official CDC Select Agent Program

Department of Environment, Health and Safety

Office 919-843-5913

Cell 919-883-7027

[MBKOZA@ehs.unc.edu](mailto:MBKOZA@ehs.unc.edu)

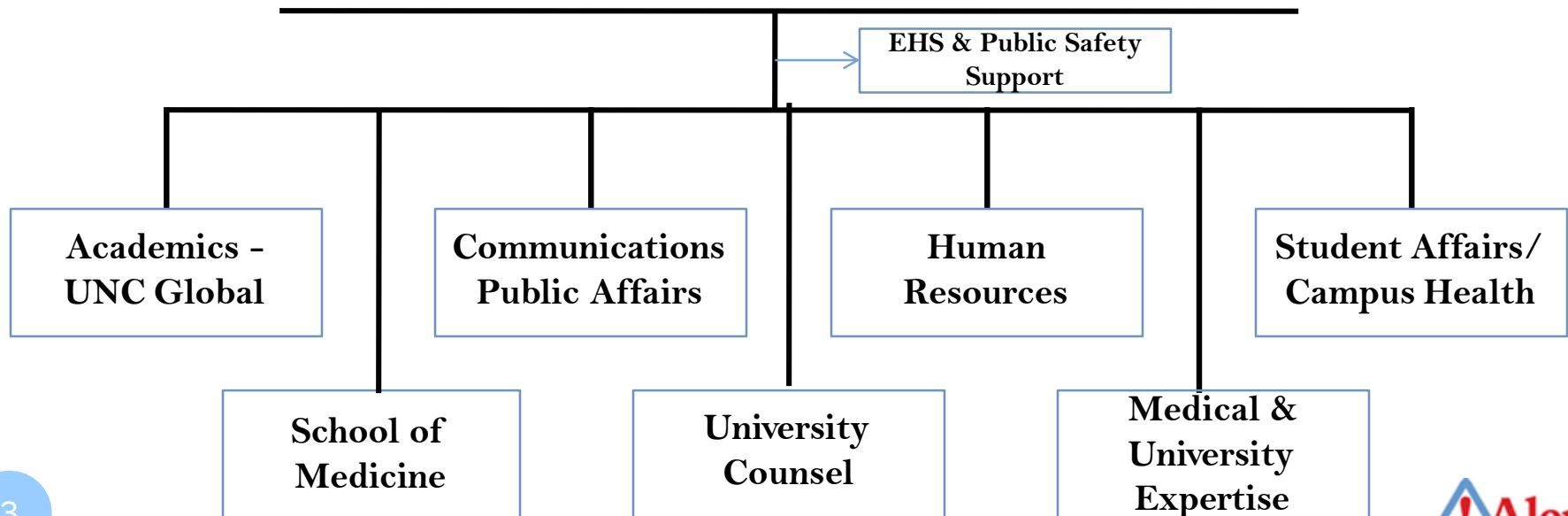
[www.ehs.unc.edu](http://www.ehs.unc.edu)

# University Policies & Processes

- **Pandemic and Communicable Disease Emergency Policy –**  
<https://hr.unc.edu/employees/policies/ehra-non-faculty-policies/pandemic-and-communicable-disease-emergency-policy/>
- **Policy Concerning Study, Travel, and Research in Countries Under U.S. State Department Travel Warnings and U.S. Centers for Disease Control Travel Notices** <https://globalhealth.unc.edu/resources/international-travel-information-and-policies/>
- **101 – University of North Carolina at Chapel Hill Policy on Continuity Planning/Tar Heel Mission Ready Planning**  
  
<https://unc.policystat.com/policy/4469249/latest/>
- **University Emergency Operations Plan**

# 2019 Communicable Disease Response Team

## Communicable Disease Response Team



# Team Purpose

---

This team has been assembled under the University's Emergency Operations plan and is following an incident command structure.

Communicable Disease planning is a very fluid process and having the ability to quickly share information and knowledge is critical. Team members have been chosen for their expertise and leadership with the responsible of sharing activities related to Ebola planning within their departments and the team. The purpose of the sub-groups is to identify and address specific planning issues as they arise.

Communications is key to this process and emails and web sites will be the initial communication vehicle. The need to have weekly or daily conference calls will be determined by the team.

# Continual Working Team

The continual working team is made of EHS and Campus Health. This team acts as the public health department for the campus community by daily monitoring the concerns of infectious disease as it relates to our campus.

## **Members of this Sub Team:**

Mary Beth Koza -EHS

Michelle Camarena - CH

Thevy Chai – CH

Ken Pittman –CH

Other members of EHS and Campus Health are utilized as needed. Such as pharmacy for medication/vaccine needs, CH- EOC manager, and material manager for supply needs, CH-HIM manager for data, immunization and record related and internal communication with students and staff for webpage and social media.

# Members

Elizabeth Ann Barnum

Allan Blattner

Noel Brewer

Kathy Bryant

Julie S Byerley

Linc Butler

Michelle Camarena

Martha Christine Carlough

Thevy Chai

Garry Coulson

Robin Cyr

Bill Gentry

Judy Culhane Faubert

James Hill

Don Hobart

Jean C. Hughes

Andrew Hunt

Darrell Jeter

Derek Kemp

Harvey Lineberry

Kate Luck

Tanya Moore

Kenneth Pittman

Christopher Payne

Elizabeth Schroeder

Ron Strauss

David Weber

Katie Bowler Young

[mediarelations@unc.edu](mailto:mediarelations@unc.edu)

# UNC-CH Actions to Date

- May 2018
  - Updated Important Travel Warning Information on University web pages to reflect latest information.
  - Initial conversations with Orange County Health Department on the returning traveler requirements.
  - Initiate the 2018 Communicable Disease Team
  - EHS website updated

# Communication Tools for Use

- Alert Carolina System
- University Websites
- Email system
- Posters / Handouts